



HOLY FAMILY HOSPITAL

at the Forefront of Medical Progress

268-BED

— Multi-Speciality Hospital —

80+

Years of Experience

14

Special Clinics

300+

Experienced Doctors

1 Million+

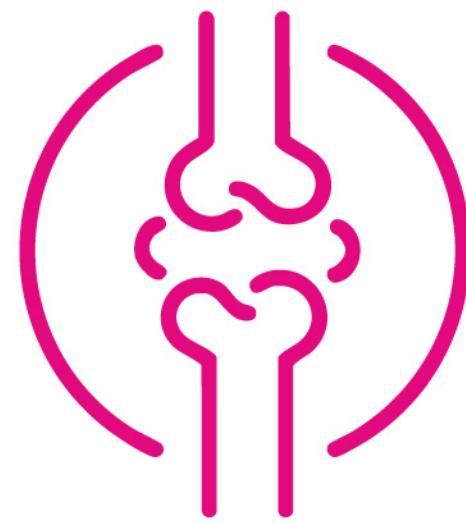
Patients Healed

Our 5 Centers of Excellence

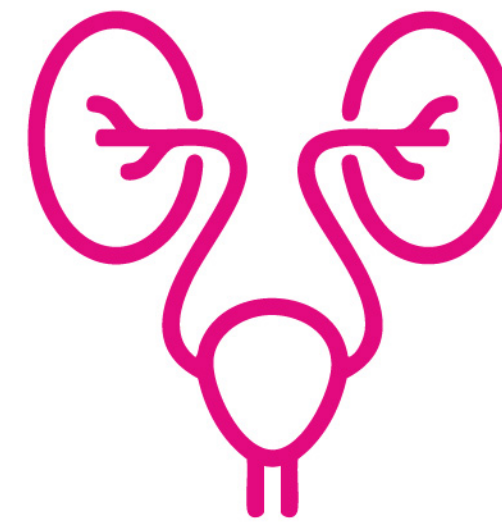
dedicated to delivering expert, patient-centric care. From diagnosis to treatment, we ensure excellence at every step of the healthcare journey.



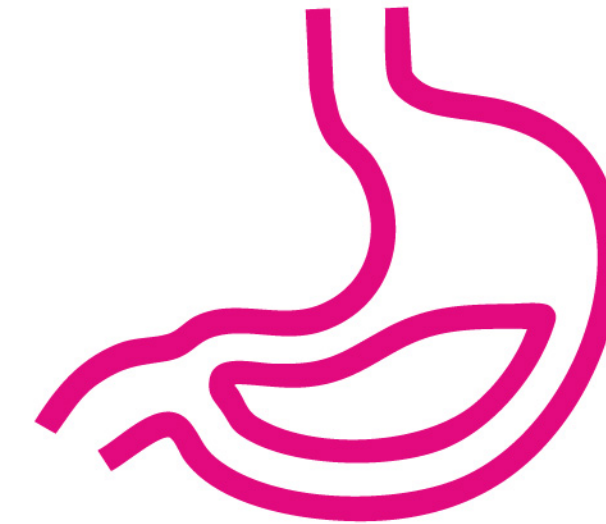
Cardiology



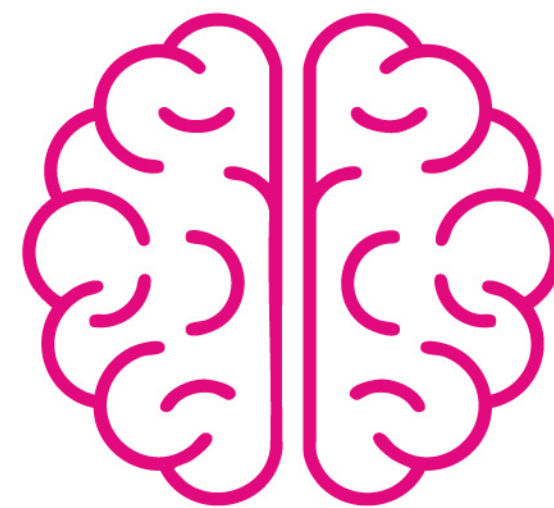
Orthopaedics



Urology



Gastroenterology



Neurosciences



Obstetrics & Gynecology

Cardiology & Cardiac Surgery Services

Non-Invasive Cardiology

- ECG, Echo, Stress Echo, Stress Test
- Holter Monitoring 12 lead Holter monitoring
- Ambulatory BP Monitoring
- Cardiac CT & MRI (in collaboration with Radiology)

Diagnostic & Interventional Cardiology

- Coronary Angiography (CAG)
- Coronary Angioplasty : Primary Angioplasty in Acute MI (PAMI) , IVUS , OCT guided angioplasty
- Physiological studies (FFR) guided angioplasty, Rotablation
- Temporary & Permanent Pacemaker Implantation
- Implantable Cardioverter Defibrillator (ICD) Implantation
- Cardiac Resynchronization Therapy (CRT-P / CRT-D)
- Electrophysiology (EP) Studies & Radiofrequency Ablation (RFA)
- Peripheral Angiography and Angioplasty - carotid & renal angioplasty

Cardiology Department



Structural Heart Intervention

Device closure of ASD/VSD/PDA, Valvotomy, TAVI (non-operative aortic valve implantation)

Non-Invasive Cardiology

- Emergency Cardiac Care
- 24/7 Cardiac Emergency & Chest Pain Unit
- Acute Myocardial Infarction Management-PAMI
- Cardiac Arrest Management with Advanced Life Support

Specialized Out-patient Services

- Arrhythmia Clinic
- Post-Cardiac Surgery Clinic
- Structural Heart Clinic
- Cardiac Rehabilitation



Department of Orthopaedics

Trauma Care

- 24x7 fracture & musculoskeletal trauma management
- Polytrauma care with Emergency & Critical Care
- Surgical fixation with approved orthopaedic implants

Joint Replacement (Arthroplasty)

- Primary & revision joint replacements
- Knee, Hip & Shoulder arthroplasty
- Bilateral Total Knee Replacement (TKR)

Sports Medicine & Arthroscopy

- Sports injury management
- Knee & Shoulder arthroscopy
- Ligament, meniscal, foot & ankle procedures

Structural Heart Intervention

- Degenerative spine disorder management
- Spinal trauma care
- Minimally Invasive Spine Surgery (MISS)

Orthopaedics Department



Conservative & Interventional Care

- Closed reduction, casting & splinting
- OPD & day-care injections and procedures

Orthopaedic Oncology

- Evaluation & selected tumour surgeries
- Multidisciplinary cancer care coordination

Paediatric Orthopaedics

- Paediatric fracture management
- Treatment of congenital and developmental orthopaedic conditions

Prehabilitation

- Post-operative & post-injury physiotherapy
- Functional recovery programmes



Department of Urology

Outpatient & Diagnostic Services

- Daily OPD services
- Evaluation of LUTS, UTI, haematuria, urolithiasis and voiding disorders
- Specialty Clinics: Kidney Stone Clinic, Urinary Incontinence Clinic
- Urological diagnostics: Ultrasound, Uroflowmetry, CT, MRI
- Urodynamic evaluation

Emergency Urology Services (24x7)

- Acute urinary retention, renal colic, obstructive uropathy
- Urosepsis management with Emergency & Critical Care teams
- Testicular torsion and genitourinary trauma
- Initial assessment and stabilization of emergencies

Endourology & Kidney Stone Management

- Diagnostic & therapeutic cystoscopy
- Ureteroscopy and DJ stenting
- Laser stone surgery
- PCNL – Percutaneous Nephrolithotomy
- Minimally invasive stone management procedures

Urology Department



Major Urological Surgery (Open & Laparoscopic)

- Nephrectomy (Simple & Radical)
- Prostatectomy and Cystectomy
- TURP / TURBT procedures
- Genitourinary trauma surgery
- Reconstructive urological procedures

Functional Urology & Prostate Care

- Urethral and suprapubic catheterisation
- Management of urethral strictures and voiding dysfunction
- Evaluation and management of BPH

Andrology & Male Sexual Health

- Male infertility evaluation
- Erectile dysfunction management
- Hypogonadism assessment and treatment

Female Urology

- Stress & urge urinary incontinence
- Voiding dysfunction
- Recurrent urinary tract infections



Paediatric Urology

- Congenital urological anomalies
- Undescended testis
- Hypospadias

Uro-Oncology Services

- Management of bladder, kidney and ureteric cancers
- Testicular and penile cancer management
- Multidisciplinary tumour board coordination

Day-Care & Minor Procedures

- Catheter care and catheter changes
- Cystoscopic and other minor urological procedures on day-care basis



Department of Gastroenterology

Outpatient & Diagnostic Services

- Evaluation and management of gastrointestinal, hepatobiliary, and pancreatic disorders
- GERD, dyspepsia, abdominal pain, altered bowel habits, GI bleed, jaundice, and chronic liver disease
- Diagnostic services including FibroScan (liver elastography), as per facility capability

Emergency Gastroenterology Services (24x7)

- Acute upper and lower GI bleeding
- Acute hepatitis, acute pancreatitis, hepatic encephalopathy
- Initial stabilization of GI emergencies in coordination with Emergency and Critical Care

Endoscopy Services

- Diagnostic and therapeutic upper GI endoscopy
- Colonoscopy
- Endoscopic biopsy, polypectomy, and hemostasis

Hepatology Services

- Fatty liver disease, viral hepatitis, cirrhosis and its complications
- Ascites, variceal bleeding, hepatic encephalopathy management

Gastroenterology Department



Pancreatico-Biliary Disorders

- Acute and chronic pancreatitis
- Obstructive jaundice and biliary tract disorders

Functional & Luminal GI Disorders

- IBS, IBD, chronic constipation, chronic diarrhoea
- Malabsorption and nutritional disorders

Day-Care & Minor Procedures

- Day-care endoscopic procedures
- Paracentesis and minor GI procedures as per credentialing

Multidisciplinary Care

- Coordination with Surgery, Oncology, Radiology, Pathology, Critical Care, and Dietetics
- OUTPATIENT & DIAGNOSTIC SERVICES
- Consultation for GI, liver, and pancreatic disorders
- Care for acidity, abdominal pain, bowel issues, GI bleed & jaundice
- Management of chronic liver disease
- FibroScan – Non-invasive liver assessment



Department of Neurosciences

Scope of Service – Neurology & Neurointervention

- Round-the-Clock Comprehensive Stroke Care
- Hyper-Acute Stroke Management with Golden Hour Protocols
- Intravenous Thrombolysis & Advanced Mechanical Thrombectomy
- Dedicated High-Dependency Neuro ICU
- 24x7 Advanced Neuro-Imaging (CT, MRI & Vascular Imaging)
- 24x7 State-of-the-Art Neuro Cath Lab Services
- Digital Subtraction Angiography (DSA) – Cerebral & Brain Angiography
- Carotid and Intracranial Angioplasty & Stenting
- Aneurysm Coiling, Stenting & Flow Diversion Techniques
- Embolization of Cerebral Vascular Malformations (AVMs, Fistulae)
- Comprehensive Neuro-Rehabilitation & Physiotherapy Programs

Scope of Service – Neurology & Neurointervention

Brain & Skull Base Neurosurgery

- Advanced Craniotomy & Brain Tumor Excision
- Minimally Invasive Brain Tumor Surgery with Neuro-Navigation & Intra-operative Imaging
- Complex Skull Base Tumor Surgery

Neurosciences Department



Spine Surgery

- Minimally Invasive Spine Procedures (Disc Prolapse, Spinal Stenosis, Vertebral Fractures – Early Mobilisation & Faster Recovery)
- Spinal Fixation & Deformity Correction (Scoliosis, Kyphosis & Complex Spinal Stabilisation)

Vascular Neurosurgery & Neurointervention

- Aneurysm Management – Advanced Microsurgical Clipping & Endovascular Techniques
- Endovascular Treatment of Stroke & Cerebrovascular Disorders

Endoscopic & Keyhole Neurosurgery

- Endoscopic Brain & Pituitary Surgery
- Keyhole Neurosurgical Procedures for Hydrocephalus & Intraventricular Lesions

Trauma & Emergency Neurosurgery

- Comprehensive Head Injury & Polytrauma Care
- Emergency Neurosurgical Interventions for Intracranial Hemorrhage & Skull Fractures

Pediatric Neurosurgery

- CSF Shunt Procedures
- Cranial Reconstruction Surgeries
- Pediatric Brain & Spine Tumor Surgery



Obstetric & Gynaecologic Services

Obstetric Services:

- Prenatal care counselling
- Routine obstetric ultrasound
- High-risk pregnancy management
- Labour and delivery management
- Postpartum care and counselling
- Management of obstetric complications (e.g. pre-eclampsia, Placenta previa)
- Obstetric surgical procedures (e.g. caesarean section, episiotomy repair)

Gynaecologic services:

- Routine gynaecologic exams and screenings (Pap smear, pelvic exam)
- Management of gynaecologic disorders (polycystic ovary syndrome, endometriosis)
- Gynaecologic surgical procedures (e.g. hysterectomy)
- Management of gynaecologic cancers (e.g. cervical, ovarian, uterine)

Obstetric & Gynaecologic Department



Reproductive health services:

- Reproductive endocrinology services (hormone replacement therapy)
- Menstrual disorder management (e.g. dysmenorrhea, amenorrhea)

Preventive services:

- Routine health screenings
- Health education and counselling (e.g. nutrition, exercise, stress management)
- Immunization

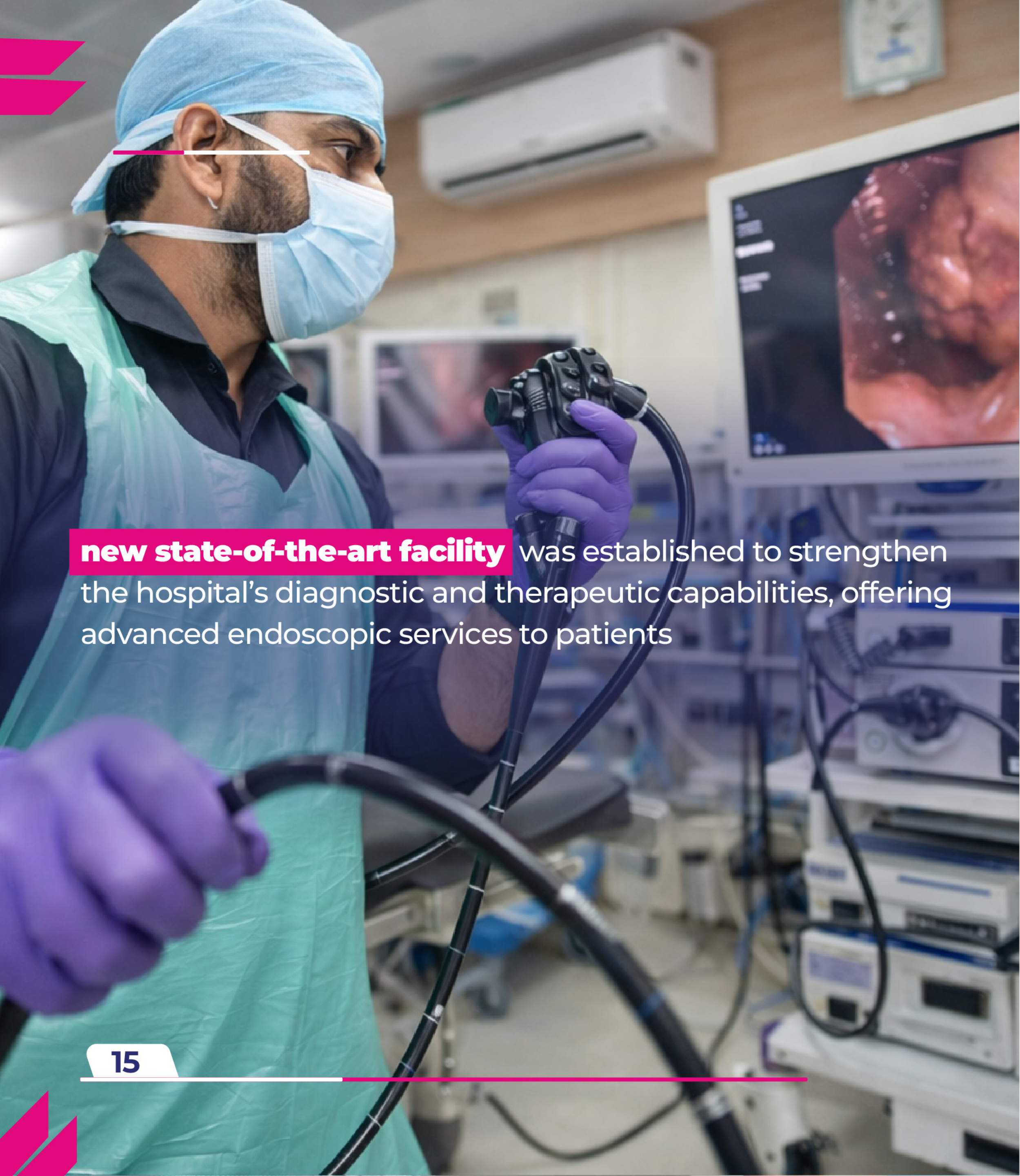


Holy Family Hospital underwent significant renovation and enhancement initiatives, focusing on key areas and facilities to elevate the standard of care and services provided. Some of our key upgrades are as follows:

Advanced Therapeutic Endoscopy Department



Hospital Upgrades



new state-of-the-art facility was established to strengthen the hospital's diagnostic and therapeutic capabilities, offering advanced endoscopic services to patients



2nd Floor A Wing Renovation

The improved infrastructure has enhanced inpatient care by providing better monitoring facilities and a more patient-friendly environment for those requiring medical management and recovery



PICU & Paediatric Ward

The facility provides specialized care for infants and children, offering advanced medical support in a safe and child-friendly environment.





3rd Floor A Wing Renovation

The Gynaecology Ward was renovated to better cater to the unique needs of women's health and maternity care. The upgraded space now features improved infrastructure, enhanced privacy and a more supportive environment for expectant and new mothers.

Awards Certifications & Milestones



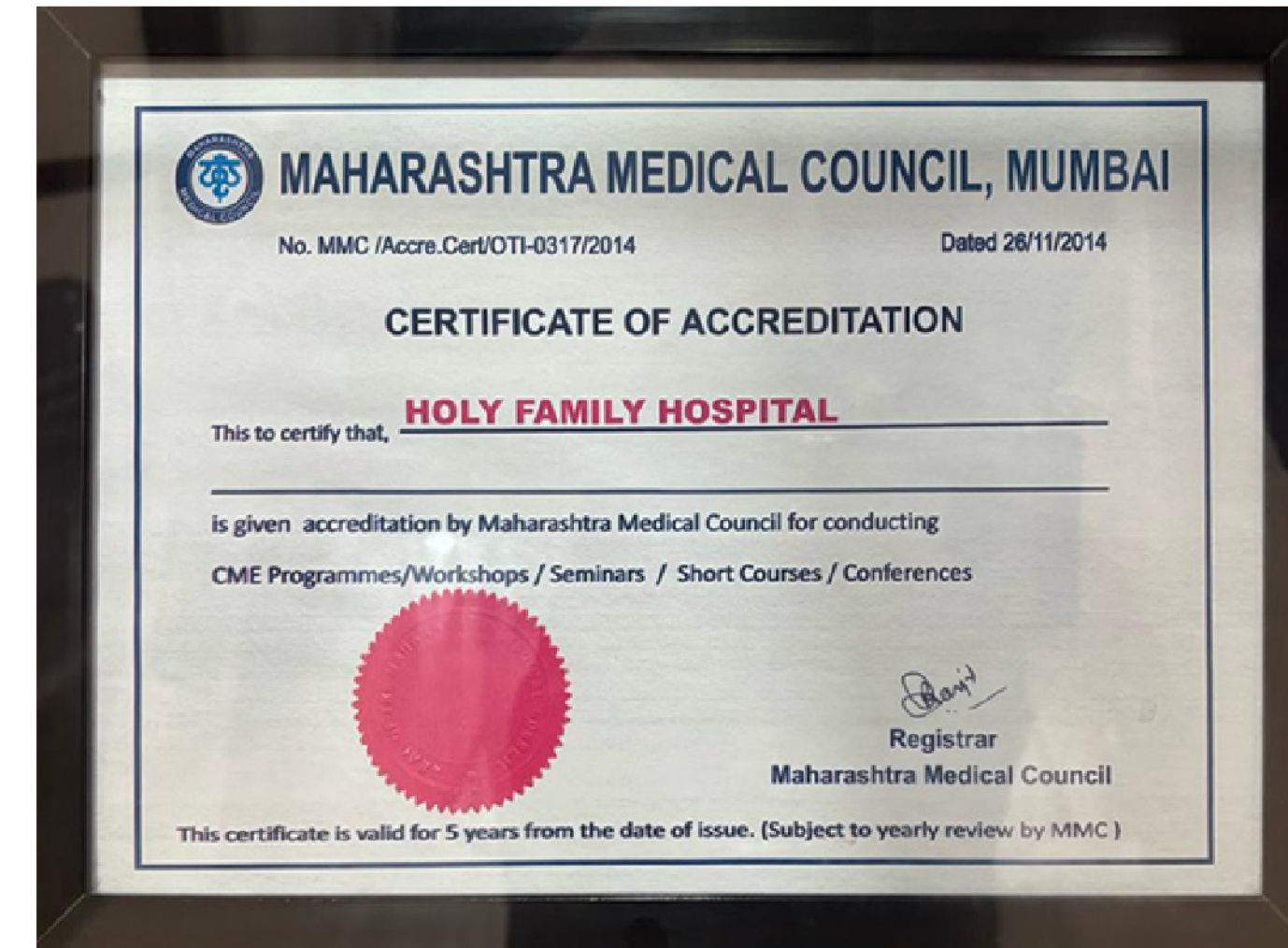
NABH Reaccreditation
Certificate 2022



Emergency NABH
Certificate 2024



ISO 9001:2015
Certification of Lab & Imaging 2024



Maharashtra Medical Council, Mumbai
Certificate of Accreditation 2014

TPA & Insurance

We make insurance processes simple and stress-free, ensuring faster approvals and seamless coordination for patients and referring doctors.

- Tie-ups with 30+ insurance companies
- Smooth and speedy claim processing
- Dedicated team for quick assistance
- Hassle-free, fast discharges with online payment options



Radiology & Advanced Diagnostics

The Radiology Department offers a comprehensive range of diagnostic imaging and minimally invasive interventional services to diagnose, monitor and treat patients. With advanced imaging modalities, the department is equipped to deliver precise reporting, quicker turnaround times and improved clinical outcomes.

- Digital X-Ray – Bones, chest & abdomen
- Ultrasound & Doppler – Paediatric & full body including vascular imaging
- CT Scan – Multi-slice full-body imaging
- MRI (1.5T) – Neuro, spine & MSK imaging
- Mammography – Breast screening & diagnosis
- Interventional Radiology – Image-guided procedures
- DEXA Scan – Bone density, fracture risk & body fast analysis
- Fluoroscopy – Real-time GI, urinary & uterine imaging



Radiology Department





Pathology

Our Pathology Laboratory is an ISO 9001:2015 accredited facility that has consistently maintained its international standards as a trusted diagnostics centre with over 1,000 diagnostic tests on offer.

- 24×7 diagnostic services
- 1000+ tests in the fields of Haematology, Biochemistry, Histopathology, Clinical Pathology, Serology, Immunology and Microbiology
- In-house Frozen Section – Immediate intraoperative diagnosis
- Advanced automation & quality assurance
- Home sample collection (by appointment)

Pathology, Micro-Biology & Blood Bank Department



24x7 Emergency Services

The Emergency Department at Holy Family Hospital is a NABH-ED certified, 24x7 facility designed for rapid response, precise intervention, and seamless escalation of care. Supported by trained emergency medicine specialists and round-the-clock diagnostics.

- NABH-ED certified 10-bedded Emergency Department
- 24x7 Emergency Medicine specialists
- Ventilators, defibrillators & portable monitors
- Evidence-based pathways for Stroke, STEMI & Pulmonary Embolism
- Bedside POCUS for trauma & critically ill patients
- Immediate Radiology & Lab access
- Seamless transfer to ICU, OT, Cath Lab & wards

The department that delivers timely, evidence-based care during the critical **“Golden Hour.”**



Emergency Department



Critical Care

Holy Family Hospital's Critical Care Units are equipped to manage complex, life-threatening conditions through advanced monitoring, specialised equipment and multidisciplinary expertise.

- Advanced ICU care for complex, life-threatening conditions
- Invasive & non-invasive ventilation
- Continuous cardiac & haemodynamic monitoring
- Dialysis & Continuous Renal Replacement Therapy (CRRT)
- Evidence-based sepsis management
- Post-operative ICU care
- Multidisciplinary, team-based approach



Critical Care Department



Nursing Services

Care You Can Trust

With one of the highest nurse-to-patient ratios across wards and ICUs, Holy Family Hospital's nursing teams deliver personalised, consistent, and clinically competent care that supports recovery and continuity.

- Care delivered in line with NABH Accreditation, INFUZE certification, NABH Emergency (ER) standards and ACE CCSD protocol
- 24x7 personalised care across wards, ICUs & HDUs
- Continuous monitoring & early intervention
- Rapid emergency triage and response
- Safe IV therapy & infection-prevention protocols
- Patient education & discharge planning
- Continuity of care with home nursing support



Backbone of safe, compassionate, high-quality patient care

Nursing Department



NABH Accredited Pharmacy

The Pharmacy at Holy Family Hospital is an NABH-accredited, fully integrated medication service that reflects our unwavering commitment to quality, safety and clinical excellence in patient care. Staffed by experienced pharmacists, the department provides personalised attention and round-the-clock service to ensure that patients get the right medicines at the right time.

NABH-accredited, 24*7 pharmacy services

- Medicines for inpatients & outpatients
- 10% discount on prescriptions
- Home delivery for added convenience
- Sourced from licensed manufacturers & stored as per standards
- Safe dispensing by trained pharmacists with patient counselling
- Special precautions for look-alike/sound-alike medicines



Pharmacy Department



Physiotherapy & Rehabilitation

The Physiotherapy Department at Holy Family Hospital plays a vital role in recovery, mobility restoration and long-term functional independence. Backed by modern rehabilitation equipment and skilled therapists, the department delivers structured, evidence-based care across conditions.

- Supporting recovery, mobility & long-term independence
- Gait, balance & functional training programmes
- Condition-specific rehabilitation protocols Cardiac rehabilitation & supervised exercise programmes
- Preventive and wellness physiotherapy
- Ergonomic counselling and lifestyle modification support



Physiotherapy Department



Specialty Clinics



Structural Heart Clinic

A specialised clinic dedicated to the comprehensive evaluation and minimally invasive management of complex valvular and structural heart diseases.



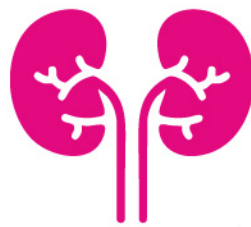
Heart Failure Clinic

Advanced diagnosis, optimisation of medical therapy, and long-term monitoring to improve quality of life and functional capacity in heart failure patients.



Arrhythmia Clinic

Evaluation and treatment of heart rhythm disorders with electrophysiology studies, ablation therapies, and cardiac device management.



Stone Clinic

Complete care for kidney and urinary stones, including advanced endoscopic and laser treatment with focus on prevention of recurrence.





Breast Clinic

Early detection, precise diagnosis, and multidisciplinary treatment of breast disorders with personalised care and timely intervention.



High-Risk Pregnancy Clinic

A specialized clinic for high-risk pregnancies, offering advanced fetal monitoring, expert maternal care, and multidisciplinary support to ensure the best outcomes for both mother and baby.



Menopause Clinic

A dedicated clinic for women aged 40+, providing comprehensive care for peri-menopausal and menopausal health, focusing on hormonal, metabolic, and bone health to improve long-term wellbeing and quality of life.





Facilities in Harmony
with Clinical Care